

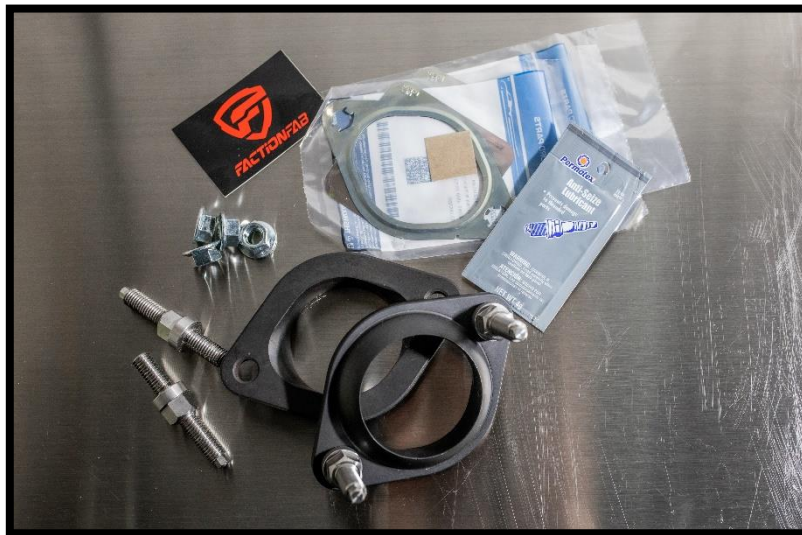


INSTALLATION INSTRUCTIONS

FactionFab Ford Turbo Adapter and Hardware Kit

Ford F-150 2011-2020 / Raptor 2017-2020 EcoBoost Models

FFA1.10226.1 – Adapter Kit
 FFA1.10226.2 – Hardware Kit



BILL OF MATERIALS – FFA1.10226.1

Item #	Description	QTY
1	TURBO ADAPTER	2

BILL OF MATERIALS – FFA1.10226.2

Item #	Description	QTY
1	ADAPTER STUDS	4
2	DOWNPIPE NUTS M10X1.5	4
3	GASKETS	2
4	ANTI-SEIZE PACKET	1

REQUIRED TOOL LIST

RATCHET / BREAKER BAR / VARIOUS EXTENSIONS
10mm, 13mm, 15mm, 18mm, 21mm SOCKETS / WRENCHES
STUD OR BOLT EXTRACTOR
PENETRATING FLUID
TORQUE WRENCH

DISCLAIMER: PLEASE READ AND MAKE SURE YOU FULLY UNDERSTAND THE INSTALLATION INSTRUCTIONS PRIOR TO INSTALLING FACTION FAB PRODUCTS AND ACCESSORIES. FAILURE TO INSTALL THE PRODUCT CORRECTLY CAN AND WILL RESULT IN IRREVERSIBLE VEHICLE DAMAGE AND OR PERSONAL HARM. IF YOU DO NOT FEEL COMFORTABLE WITH ANY OF THE REQUIRED STEPS, WE HIGHLY SUGGEST TAKING THE VEHICLE TO A QUALIFIED AND EXPERIENCED TECHNICIAN. FAILURE TO UNDERSTAND THE INSTRUCTIONS WHICH RESULTS IN DAMAGE AND OR INJURY IS THE SOLE RESPONSIBILITY OF THE INSTALLER AND ALL FAULT LIES WITH THAT PARTY AND OR INDIVIDUAL AND IS NOT IN ANY WAY, SHAPE OR FORM THE RESPONSIBILITY OF FACTION FAB.

FACTION FAB PRODUCTS ARE SOLD FOR "OFF-ROAD" USE ONLY AND MAY NOT MEET LEGAL REQUIREMENTS FOR OPERATIONS ON PUBLIC ROADS AND HIGHWAYS. WE PUT THE RESPONSIBILITY SOLELY ON THE END CONSUMER/CUSTOMER TO VERIFY THAT THE PRODUCTS DO NOT AFFECT THE VEHICLES ELIGIBILITY TO BE DRIVEN ON PUBLIC ROADS AND HIGHWAYS. INSTALLATION OF FACTION FAB PRODUCTS MAY VOID FACTORY OR AFTERMARKET WARRANTIES.

USE OF PRODUCT IN A NON-CONFIRMED APPLICATION, DISASSEMBLY OF THE PRODUCT, MODIFICATION OF THE PRODUCT, EXPOSING PRODUCT TO CORROSIVE OR PETROLIUM BASED CHEMICANS WILL VOID ANY AND ALL WARRANTY.

1

SPRAY PENETRATING FLUID ON ALL DOWNPIPE BOLTS / FLANGES. MAY NEED REPEATED AFTER UNDER PROTECTION IS REMOVED IN STEP 4



2

REMOVE 4 BOLTS HOLDING PROTECTION SHIELD WITH 13mm. REMOVE SHIELD



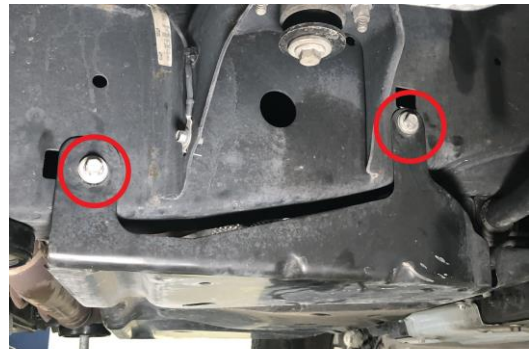
3

REMOVE 2 BOLTS FROM FRONT OF MAIN PROTECTION SHIELD WITH 10mm



4

REMOVE 2 BOLTS FROM EACH SIDE OF MAIN PROTECTION SHIELD WITH 13MM. REMOVE SHIELD



5

REMOVE BOLTS HOLDING WIRING HARNESS TO TRANSMISSION CROSSMEMBER WITH 10mm



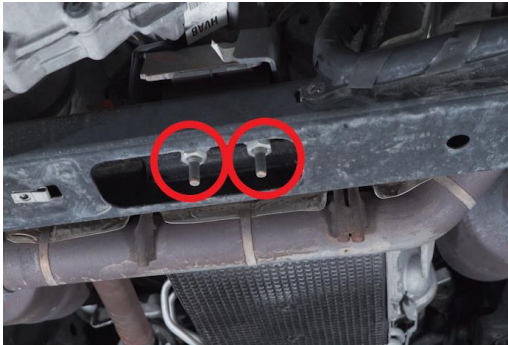
6

REMOVE BOLTS CONNECTING HEAT SHIELDS TO TRANSMISSION CROSS MEMBER WITH 10MM. NOTE THAT PHOTO IS WITH CROSS MEMBER ALREADY REMOVED TO SHOW LOCATIONS



7

REMOVE NUTS HOLDING TRANSMISSION CROSS MEMBER TO TRANSMISSION MOUNT WITH 21mm



8

SUPPORT TRANSMISSION THEN REMOVE CROSSMEMBER BOLTS WITH A 15mm AND 18mm



9

REMOVE CROSSMEMBER



10

REMOVE DOWNPIPE REAR FLANGE WITH 13mm



11

REMOVE DOWNPIPE SLIP JOINT FROM REAR WITH 15mm. JOINT SLIDES ONTO MID PIPE EASIER



12

OPTIONAL- REMOVE DOWNPIPE SLIP JOINT FROM MIDDLE OF DOWNPIPE WITH 15mm



13

COMPLETELY REMOVE HEAT SHIELD THAT PASSES UNDER DOWNPIPE WITH 10mm



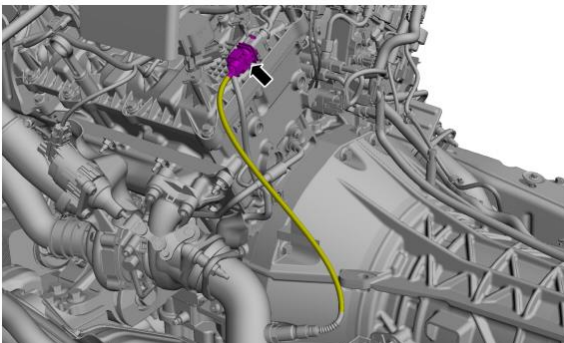
14

UNBOLT TRANSMISSION MOUNT FROM TRANSMISSION USING 15mm. 2 BOLTS PER SIDE. MOUNT WILL COME OFF WITH THE DOWNPIPE



15

UNPLUG ALL 4 o2 SENSORS FROM HARNESS. 2 ARE UP HIGH ABOVE THE TURBOS, 2 ACCESSIBLE NEXT TO TRANSMISSION



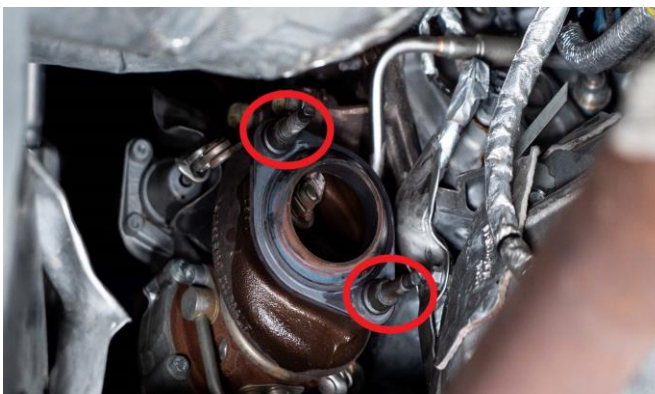
16

REMOVE 4 TURBO TO DOWNPIPE NUTS WITH 15mm, THEN REMOVE DOWNPIPES.



17

REMOVE ADAPTER STUDS WITH STUD OR BOLT EXTRACTOR



18

REMOVE TURBO ADAPTER AND GASKET. CLEAN SURFACE OF FLANGE



19

INSTALL NEW OEM GASKET, FACTIONFAB TURBO ADAPTER, AND STUDS. USE OF ANTI-SEIZE ON STUDS IS RECOMMENDED. TORQUE TO 30 ft·lbs



20

REINSTALL DOWNPIPES AND INSTALL THE NEW NUTS ON STUDS. ALTERNATE TIGHTENING THE NUTS TO ENSURE EVEN DISTRIBUTION OF FORCE



21

CONNECT SLIP JOINTS, REAR FLANGE (ALTERNATE TIGHTENING BOLTS) AND BOLT DOWN TRANSMISSION MOUNT. CONNECT ALL o2 SENSORS



22

REPLACE REMOVED HEAT SHIELD, THEN CROSS MEMBER. BOLT DOWN ALL HEAT SHIELDS. ADD NUTS TO TRANSMISSION MOUNT



23

REPLACE WIRING HARNESS BOLTS, THEN FINISH WITH BOTH PROTECTION SHIELDS.



22

TORQUE SPECS:

- ADAPTER TO DOWNPIPE NUTS: 30 ft·lbs
- SLIP JOINT CLAMP NUTS: 41 ft·lbs
- DOWNPIPE TO MID-PIPE BOLTS: 30 ft·lbs
- TRANS MOUNT BOLTS: 76 ft·lbs
- TRANS MOUNT TO CROSSMEMBER NUTS: 85 ft·lbs
- TRANS CROSSMEMBER BOLTS: 76 ft·lbs
- HEAT SHIELD TO FRAME BOLT: 8 ft·lbs
- HEAT SHIELD TO TRANS CROSSMEMBER BOLTS: 15 ft·lbs
- WIRING HARNESS BOLTS: 15 ft·lbs
- L-SHAPED PROTECTION SHIELD BOLTS: 15 ft·lbs
- MAIN PROTECTION SHIELD BOLTS: 8 ft·lbs

WE ALSO RECOMMEND RETORQUING ALL DOWNPIPE AND EXHAUST BOLTS AFTER A FEW HEAT CYCLES